

DRAWING NUMBER
12-72

STATE OF FLORIDA
COUNTY OF PALM BEACH SS

KNOW ALL MEN BY THESE PRESENTS, that the Swain Development Corporation, an organization existing under the laws of the State of Florida, the owner of the following described property - The NW¹ of the NW⁴ of the NE⁴ and the W² of the E² of the NW⁴ of the NE⁴ in section 25, Township 44 S, Range 42 E, containing 20 acres more or less, has caused the said described land to be surveyed and platted as shown hereon and does hereby dedicate to the perpetual use of the public, as public highways, the streets, and road, trail and alleys shown hereon, reserving unto itself its successors and assigns the reversion or reversions of same, whenever abandoned by the public or discontinued by law.

IN WITNESS WHEREOF, the said Swain Development Corporation has caused these presents to be executed in its name by its president, attested by its secretary, and its corporate seal to be hereto affixed, at Lake Worth, county of Palm Beach, State of Florida, this the 1st day of October, A.D. 1925

Signed, sealed and delivered
in the presence of:

THE SWAIN DEVELOPMENT CORPORATION

By L.C. Swain President

Attest E.C. Swain Secretary

STATE OF FLORIDA
COUNTY OF PALM BEACH SS

BEFORE ME AN OFFICER duly authorized to administer oaths and take acknowledgments, personally appeared L.C. Swain and E.C. Swain, who first being duly sworn, did acknowledge before me that they are the president and secretary respectively of the SWAIN DEVELOPMENT CORPORATION, and that they executed the foregoing instrument as such officers of said corporation, by and with the authority of the board of directors of said corporation, for the purposes therein expressed, and that their act and deed was the act and deed of said corporation.

IN WITNESS WHEREOF, I have hereunto set my hand and seal at Palm Beach County, Florida, this the 1st day of October, A.D. 1925.

Notary Public

My commission expires

STATE OF FLORIDA
COUNTY OF PALM BEACH SS

I HEREBY CERTIFY, that the plat shown hereon is a true and correct representation of a survey of the land described in the foregoing dedication, made under my direction, and is accurate to the best of my knowledge and belief, and that the permanent reference monuments as shown have been set.

E.L. Baird
Fla. Cert. #509

Subscribed and sworn to before me at West Palm Beach, Florida, this the 30th day of September, A.D. 1925.

Walter Behren
Notary Public

My commission expires November 15, 1927

Approved

[Signature]
Mayor, Town of Lake Worth

Approved Oct 7th 1925
Board of County Commissioners
By Geo. O. Butler
County Engineer

PLAT NO. 1 OF GREEN ACRES 72

A SUBDIVISION OF PART OF

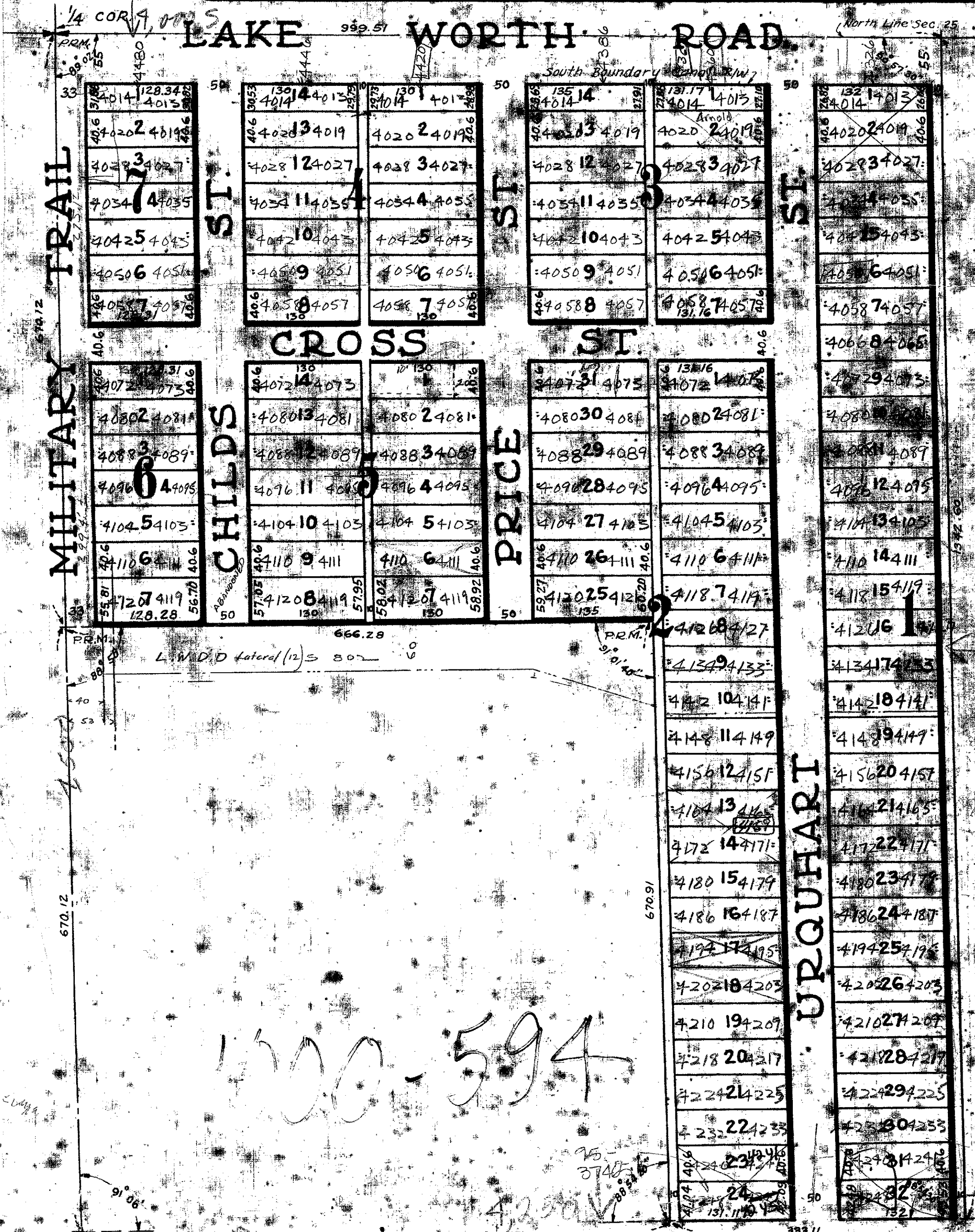
SEC. 25 TWP. 44 S R. 42 E

PALM BEACH COUNTY, FLA.

SEPT. 1925 SCALE 1"=100 FT. H.C. FUGATE ENG. CO.

SWAIN DEVELOPMENT CORPORATION
Owners, Developers & Builders
Lake Worth, Fla.

Mail of 1925
October 25
Plat 72
Geo. O. Butler



12
72

25/44